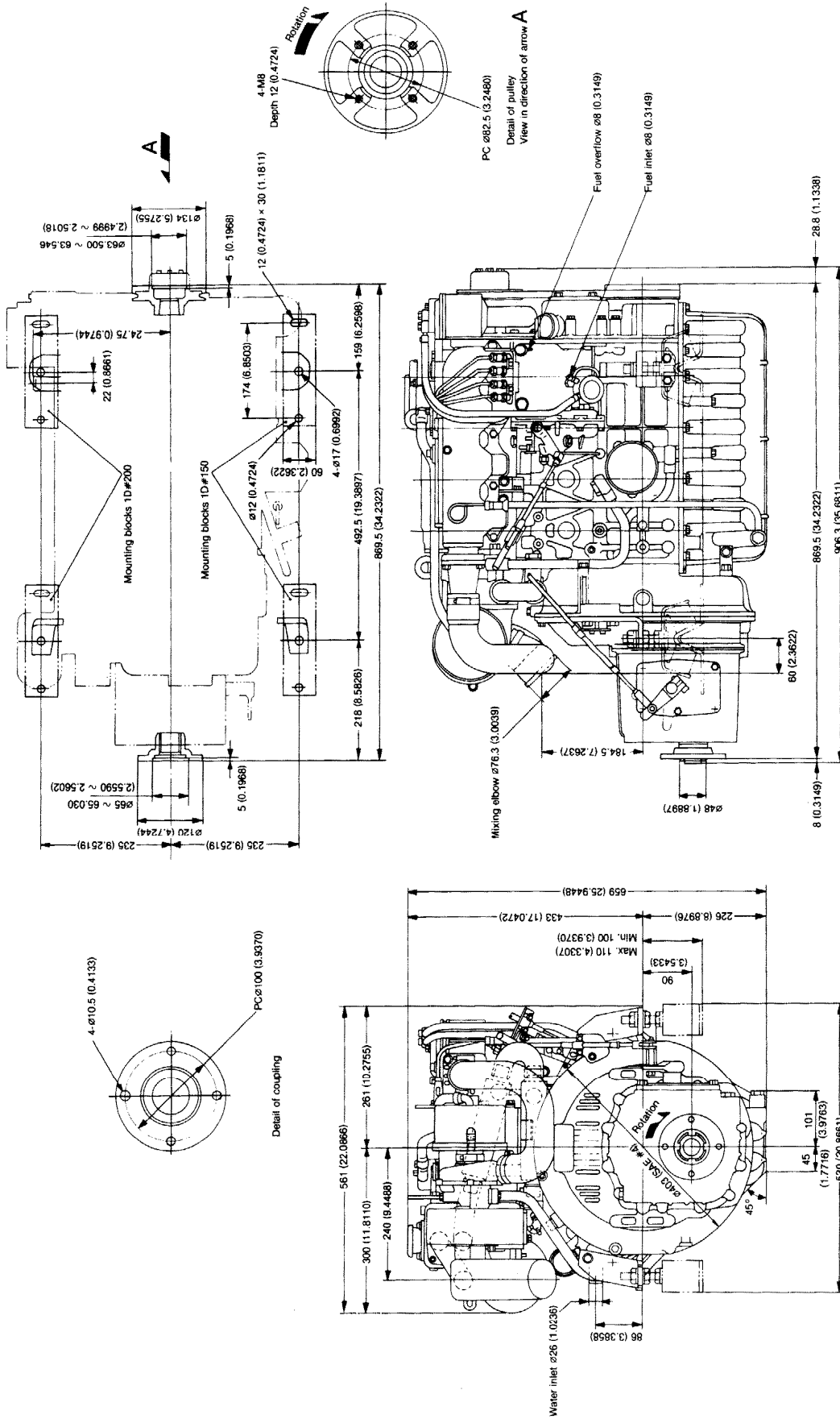


YANMAR 4JHTE

Model.	4JHT(B)E
Bore x Stroke.	78 X 86mm
Displacement.	1,644 cc.
Configuration.	4 Cylinder, vertical, 4cycle water-cooled diesel engine. Direct injection. With Turbocharger.
Sales date app..	1984 - 1989
Dimensions LxWxH mm.	906 X 561 X 659mm
Dry weight.	232Kg (234Kg)
Output: max. / continuous.	55Hp(40,5Kw)/3600Rpm / 50Hp(36,8Kw)/3500Rpm
Cooling System.	Constant high temperature fresh water cooling
Starting System.	Starter: 12V - 1,8Kw Generator: 12V - 55A (LR155-20)
Lubrication system.	Forced lubrication by trochoid pump
Mounting flange No.	SAE 4
Clutch.	Constant mesh, multiple friction disc (KBW20)
Rotation, crankshaft / propel.	Counterclockwise / Clockwise viewed from stern
Fire Order.	1 - 3 - 4 - 2 - 1
Max. Torque.	11,2Kgm/3200Rpm
Fuel Consumption.	Max rpm. 185g/Hp-Hr
Notes:	(B)= Gearbox KM4A downangel 7° Cone type - Birotation
Service Data:	
Engine oil.	6,5L CD - 15W/40
Gear oil.	1,2L ATF "A" (KBW20) / 1,3L CD - 15W/40 (KM4A)
Valve clearance (Cold).	Intake: 0,2mm Exhaust: 0,2mm
Fuel Injection Timing.	12° B.T.D.C.
Fuel Injection Pressure.	200+- 5Kg/cm ²
Turbocharger Boost press.	400 - 550mmHg at max. output
Lub. Oil press.	3,5 - 4,5Kgf/cm ² at max. output
Top Clearance / Compression.	0,71 - 0,89mm / 19 - 24Kg/Cm ²
<i>Tightning Torque:*</i>	
Cylinder Head.	8,5Kgm
Bearing Con-Rod.	4,75Kgm
Bearing Main.	10,0Kgm
Flywheel Bolt.	7,5Kgm
Damper disk bolts.	2,6Kgm
Crankshaft V-pulley bolt.	12,0Kgm

6-2 4JH-TE

mm (in.)



Note: DWG shows mounting blocks at original height.
Engine weight will compress blocks by 4mm (approx).